



## Support Conservation Career Pathways

Orders are already coming in so ensure you get your frame purchased before the graduation rush.

[SHOP HERE](#)

## FEATURED PARK



Photos and facts of  
your favorite parks,  
one issue at a time

### Adirondack Park New York

**FACT 1:** Adirondack Park is the largest park in the lower 48 states - even *including* National Parks.

**6.1 million acres**

**FACT 2:** It is not managed by the state's Parks agency. Since Adirondack Park is a combination of private and publicly-owned land (almost half of which is *constitutionally-protected* wilderness preserve), it is managed by the state's Dept. of Environmental Conservation.



*"THE LANDS OF THE STATE, NOW OWNED OR HEREAFTER ACQUIRED, CONSTITUTING THE FOREST PRESERVE AS NOW FIXED BY THE LAW SHALL BE FOREVER KEPT AS WILD FOREST LANDS. THEY SHALL NOT BE LEASED, SOLD OR EXCHANGED, OR BE TAKEN BY ANY CORPORATION, PUBLIC OR PRIVATE, NOR SHALL THE TIMBER THEREON BE SOLD, REMOVED OR DESTROYED."*

- [Article 14](#) of the 1894 New York State Constitution

Nominate *your* favorite local, state, or national park [here](#) so our subscribers can learn about it.

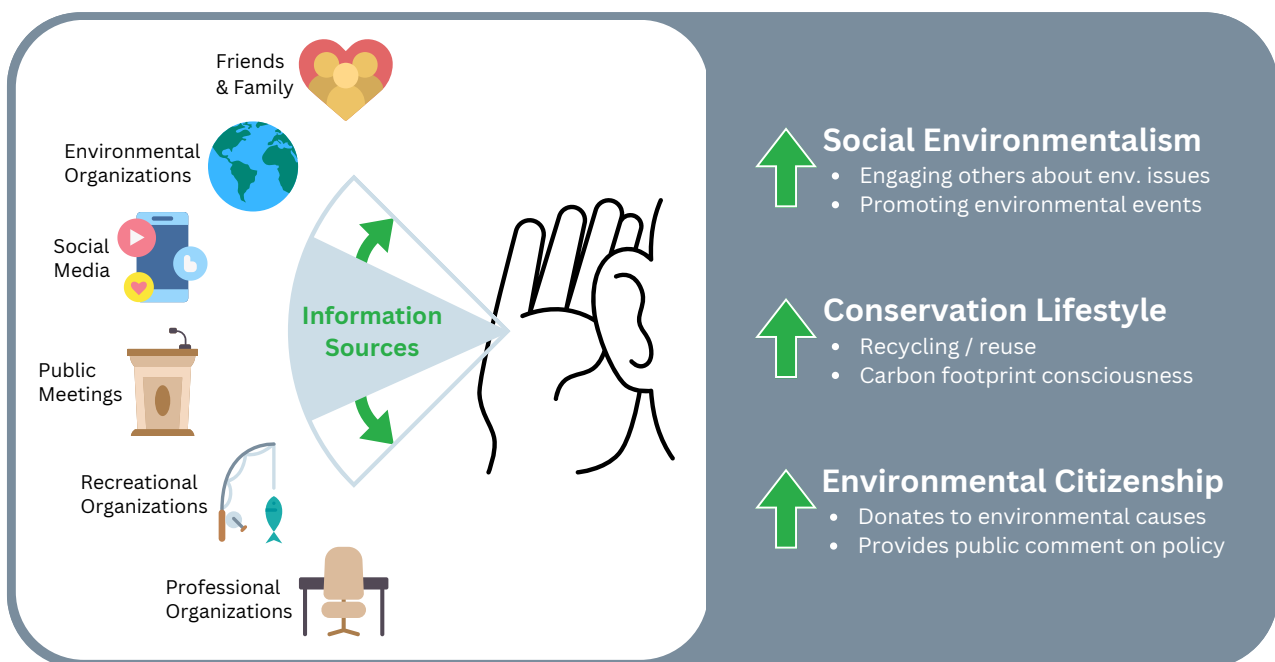
# PARK PERKS



Visualizing key research to show why parks matter

Since increasing park constituency is crucial to effective protected area management, we are going to bend the arc a bit this week to discuss why park *engagement* matters. In an [article](#) published late last summer in the *Journal of Environmental Management*, a team of North American university scholars surveyed residents of Alaska's Denali region about their values, concerns, and behavior as well as how they received information on regional protected area management issues. Using structural modeling techniques, the authors found that residents who received information from **more sources** were more likely to engage in all three pro-environmental behaviors measured.

## How Diversity of Learning Influences Behavior



The team's findings reinforce the concept that in order to *increase levels of community engagement*, policy makers and protected area managers should encourage and facilitate community learning from **many varied information sources**, especially those with high social interaction and dialogue.

**Q: What do you call a sloth sanctuary?**

**PLAYGROUND**

**A: a midlife area**

## CONGRATULATIONS

**Toddi Steelman** - Institute Ex-Officio Board Member and Stanback Dean of the Nicholas School of the Environment at Duke University - for [being named](#) to the World Wildlife Fund's Board of Directors.

**Ishanvi Malayanil** - Duke University dual-degree undergraduate student - for receiving a Stanback Fellowship to help the Institute research effective ways to diversify conservation recruitment.