



Applications opened this week to join the first cohort of **Forest Corps** Members. As the newest workforce pathways program under the American Climate Corps initiative, Forest Corps will train hundreds of future conservation professionals the science and techniques of reforestation and resource management. We're very excited for these candidates and their future program successes.

FEATURED PARK



Photos and facts of
your favorite parks,
one issue at a time

Congaree National Park South Carolina

FACT 1: The park hosts a unique floodplain ecosystem home to many of the largest trees in the Southeastern US. In addition to its designation as an International Biosphere Reserve and a Globally Important Bird Area, Congaree held three different federal designations in its first three decades:

1974 - Congaree Swamp National Natural Landmark
1976 - Congaree Swamp National Monument
2003 - Congaree National Park

FACT 2: Prior to being protected, the once thriving cypress and hardwood forests of the Congaree, Wateree, and Santee River floodplains were decimated by timber harvesting. *Less than 1%* of the state's old-growth bottomland forest remains intact - **90%** of which is preserved in the park.

Nominate *your* favorite local, state, or national park [here](#) so our subscribers can learn about it.

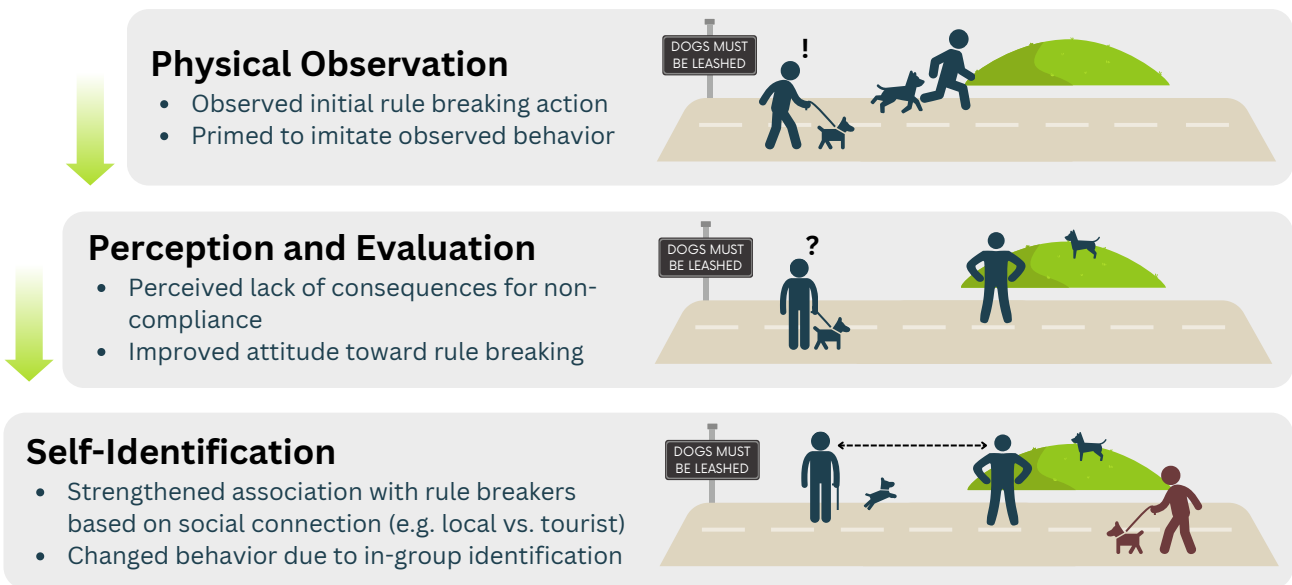
PARK PERKS



Visualizing key research to show why parks matter

Among recreational protected areas, conservation effectiveness depends heavily on visitor compliance. This week's [article](#), published this August in the journal *Trends in Ecology and Evolution*, explores the influence of social factors on protected area rule violations. Reviewing the recent academic literature, the authors describe several key cognitive processes and provide a framework for analyzing decision-making among conservation rule breakers.

Theories on the Perpetuation of Rule Breaking



The authors suggest that social factors may **strongly influence** the behavior of potential rule breakers, gradually increasing the severity of rule breaking as more visitors encounter it. Worse still, groups of rule breakers likely have even stronger social influence than individual ones, further compounding non-compliance. The authors believe that more research on *social dynamics*, not just individual decision theory, could confirm these rule breaking pathways. For policymakers and park managers, this knowledge could help strengthen proposals and streamline enforcement, accelerating conservation impacts.

PLAY GROUND

Where did the banana win its lawsuit?

on a peel

SHOPPING FOR A RECENT OR SOON-TO-BE GRADUATE?

Sustainably built *Park-It Frames* are the perfect gift idea and help support the Institute's conservation workforce programming.



SHOP FRAMES